

South East Presbytery Office - Directions

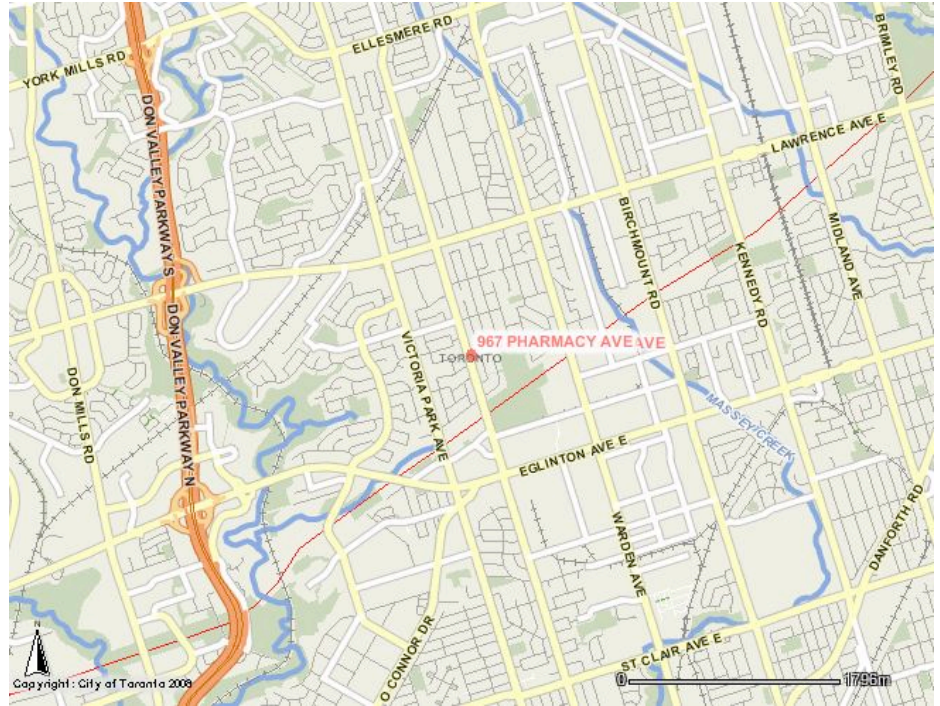
963 Pharmacy Avenue
Toronto, ON

General Description:

Pharmacy Avenue runs north-south; it is immediately parallel with Victoria Park Avenue (on the West) and Warden Avenue (on the East). The SE Presbytery office is located in the quadrant of Lawrence Avenue, (to the north) and Eglinton Avenue (to the South), Victoria Park (West) and Warden (East).

The church building is attached to Wilmar Court a non-profit Senior's housing complex. The building is located on the east side of Pharmacy, at Elm Bank Road (which only runs east off of Pharmacy).

To gain access to the parking lot use Elm Bank Road.



Detailed Maps:

Mapquest

<http://www.mapquest.com/maps?city=Toronto&state=ON&address=963+Pharmacy+Avenue+>

Google Maps

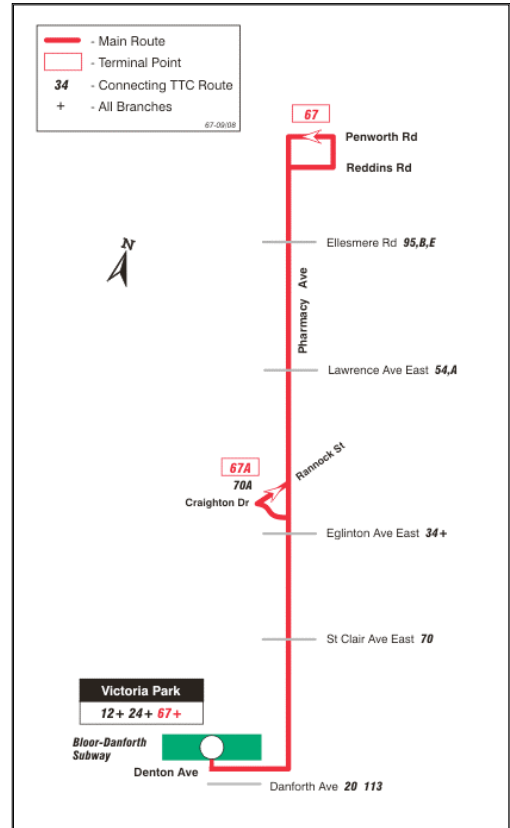
http://maps.google.com/maps?f=q&source=s_q&hl=en&geocode=&q=963+Pharmacy+Avenue+toronto+on&ll=37.0625,-95.677068&sspn=42.174768,55.898438&ie=UTF8&t=h&z=16&iwloc=addr

TTC Directions –

Pharmacy Bus 67 – runs from Victoria Park Subway Station in the south to just north of Ellesmere in the north – (short TTC run)

- **Weekday availability**
 - o AM Rush hour (6-9 am – every 6-7 minutes or less)
 - o Daytime (9:15-3 – every 15 minutes)
 - o PM Rush hour (3-7pm – every 10minutes or less)
 - o Evening (7-9 pm – every 10 minutes)
 - o Later evening (9+ - every 15 minutes)

- **Saturday availability**
 - o Early morning (6-10am – every 20 minutes)
 - o Daytime (10-7 – every 22-23 minutes)
 - o Evening (7-11 – every 20 minutes)

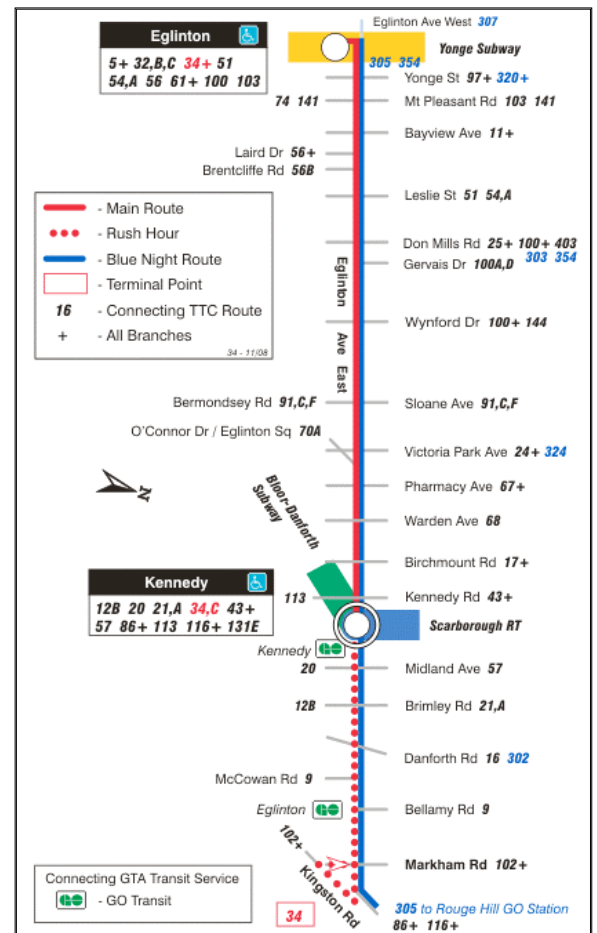


Eglinton Avenue Bus - 34 East (both east & west bound)

Get off at Pharmacy - Walk north (1.1 km. – approx. 13 minutes) or catch the Pharmacy 67 bus – north bound)

- **Weekday availability**
 - o Early morning ,Daytime & Evening (6:30 am – 10 pm)
Every 10 minutes or less
 - o Late evening – 10pm + every 14 minutes

- **Saturday availability**
 - o Early morning (6-9:15 am – 12 every minutes)
 - o Daytime (9:20-7 – every 10 minutes)
 - o Evening (7-11 – every 11-14 minutes)

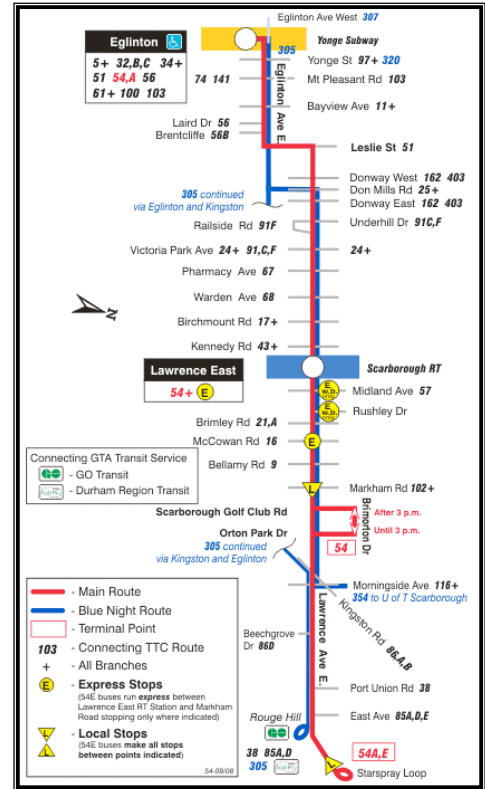


Lawrence Bus - 54

Walk south (1 km. – approx 11 minutes)
or catch the Pharmacy 67 bus – south bound)

- **Weekday availability**
 - o AM Rush hour (6-9:15 am – every 10 minutes or less)
 - o Daytime (9:15-3 – every 6 minutes)
 - o PM Rush hour (3-7 – every 6-7 minutes)
 - o Evening (7-9 – every 10 minutes)
 - o Later evening (9+ - every 15 minutes)

- **Saturday availability**
 - o Early morning (6-9:15 am – every 15 minutes)
 - o Daytime (9:20-7 – every 7-8 minutes)
 - o Evening (7-11 – every 15 minutes)

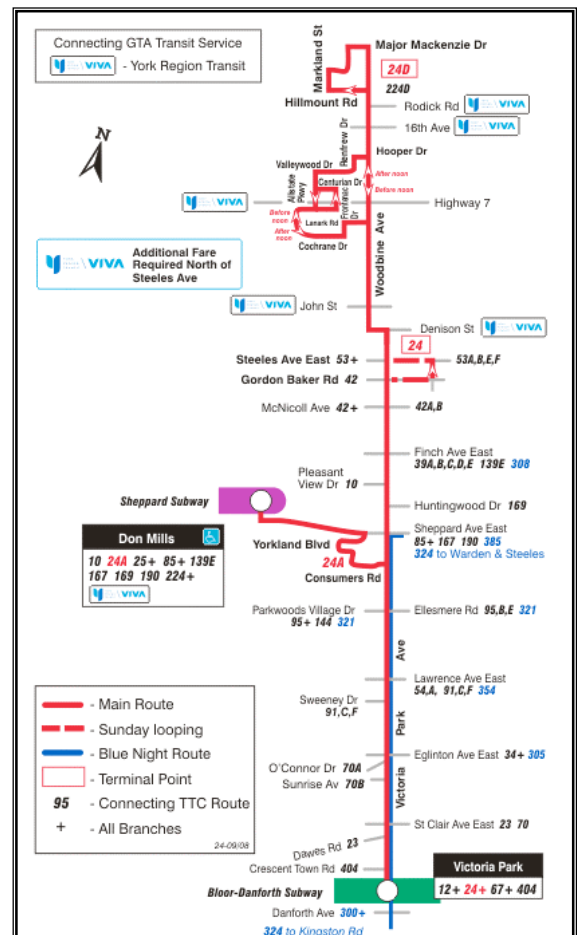


Victoria Park - 24

Get off at Innismore Crescent – walk east - .5 Km. or 6 minutes
Get off at Arncliffe – walk east - .6 kl. – 6 minutes

- **Weekday availability**
 - o AM Rush hour (6-9:15 am – every 5 minutes)
 - o Daytime (9:15-3 – every 10 minutes)
 - o PM Rush hour (3-7 – every 5 minutes)
 - o Evening (7-9 – every 9 minutes)
 - o Later evening (9+ - every 14 minutes)

- **Saturday availability**
 - o Early morning (6-9:15 am – 15 every minutes)
 - o Daytime (9:20-7 – every 10 minutes)
 - o Evening (7-11 – every 14 minutes)



I:\ADMIN\Commissions and Restructuring Project\Presbyteries Commission\Southeast\South East Presbytery Office - Directions Feb 26, 2009.doc